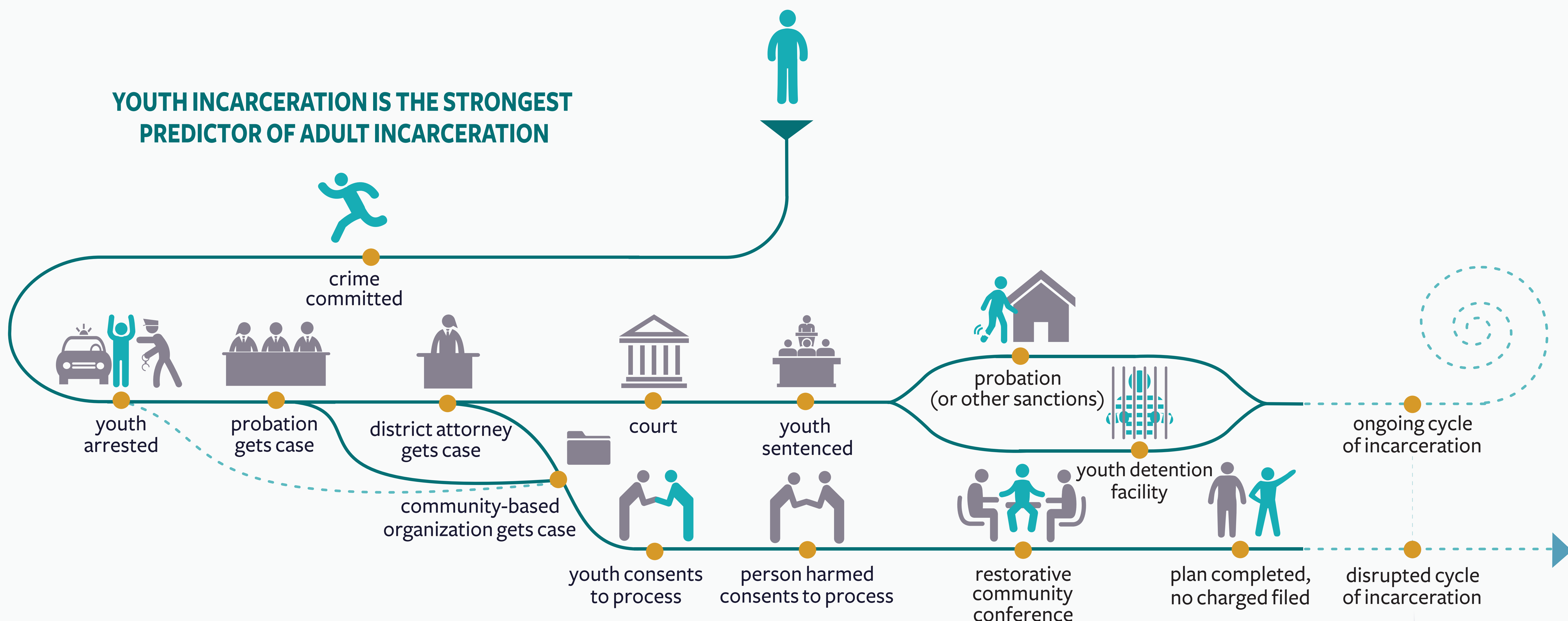
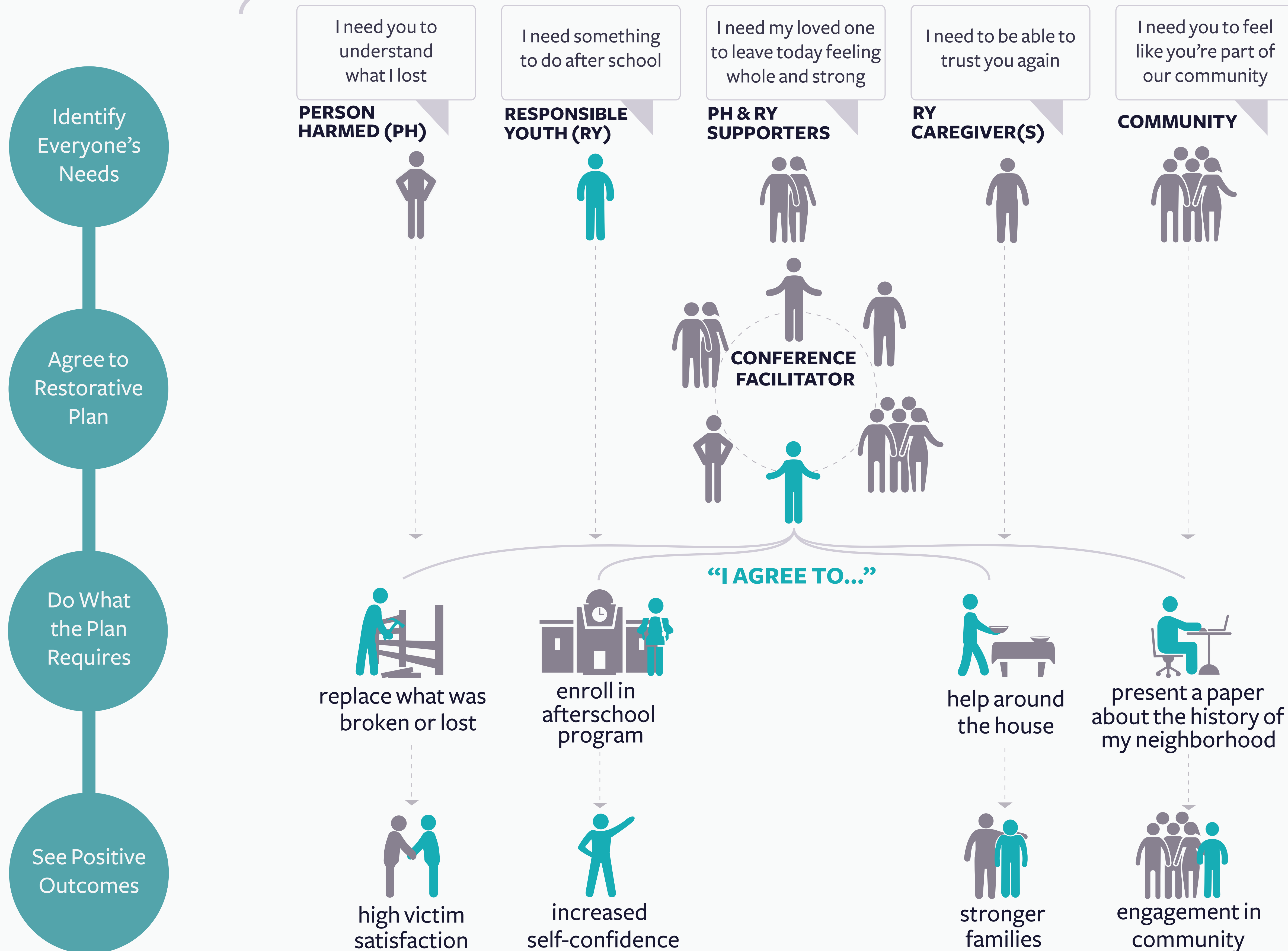


RESTORATIVE COMMUNITY CONFERRING IN ALAMEDA COUNTY

YOUTH INCARCERATION IS THE STRONGEST PREDICTOR OF ADULT INCARCERATION



RESTORATIVE COMMUNITY CONFERENCE



RESTORATIVE JUSTICE IMPROVES OUTCOMES

- 91%** satisfaction for participating victims
- 44%** reduction in recidivism for youth
- \$ → \$** long term and short term cost savings

IMPACT/JUSTICE
A National Innovation and Research Center

communityworks
JUSTICE DEMANDS HUMANITY

Created by Eliza Sherpa November 2017

- Identify Everyone's Needs
- Agree to Restorative Plan
- Do What the Plan Requires
- See Positive Outcomes